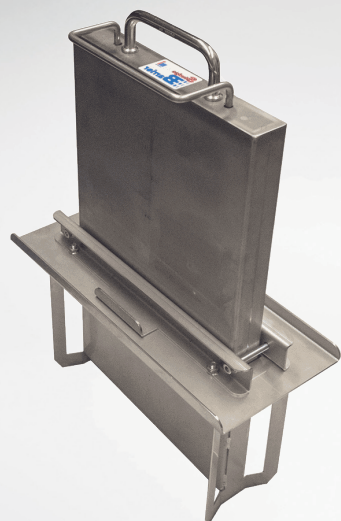


SLUDGE BARRIER

Mayfran International's manual Sludge Barrier is a compact and portable magnetic separation system that removes small ferrous chips and fines from the coolant tank. The Sludge Barrier is ideal for steel, cast and/or ductile iron applications and is available in two sizes to best fit your coolant tank and application.



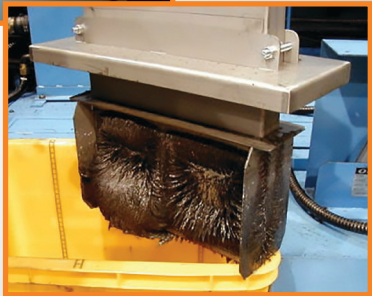
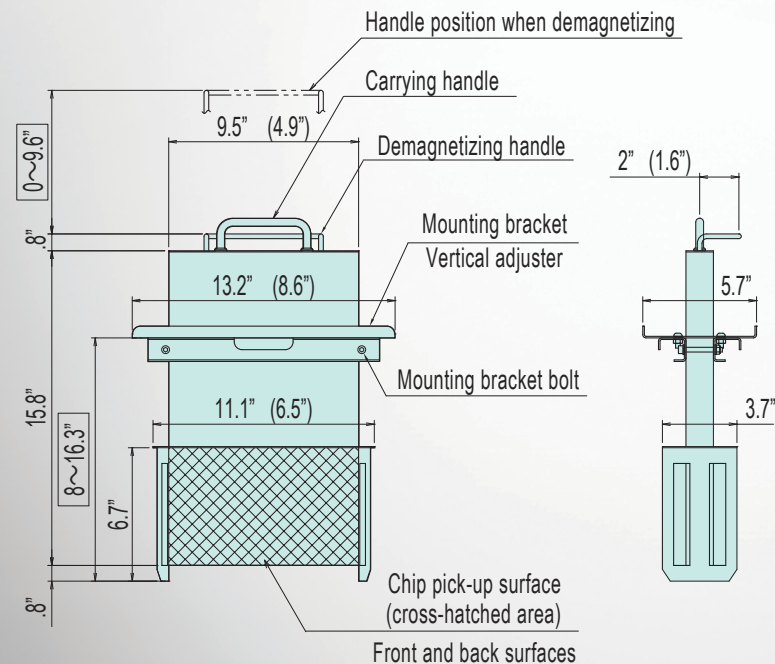
FEATURES AND BENEFITS

- Compact and portable sludge recovery unit with built in magnets.
- Simplifies in-tank sludge recovery and disposal for ease of maintenance.
- Easy retrofitting for existing coolant tanks by merely cutting 12" x 4.5" slot in the cover or lid.
- Mount near the pumps to reduce the amount of particulate sent back to the machine or mount next to the conveyor to remove ferrous particles as they exit the conveyor.

SPECIFICATIONS

MODEL NUMBER	DIMENSIONS	WEIGHT
SB4012	18.2" x 8.6" x 5.7"	11.7 lb
SB4024	18.2" x 13.2" x 5.7"	21.4 lb

Dimensions inside parentheses are for model SB4012.



QUALITY, BUILT IN.

Innovation in Motion
TSUBAKI

mayfran
INTERNATIONAL

AUTO SLUDGE BARRIER

Mayfran International's Auto Sludge Barrier is a motorized automatic magnetic separation system that removes small ferrous chips and fines from the coolant tank. The Auto Sludge Barrier is ideal for steel, cast and/or ductile iron applications and is available in two sizes to best fit your coolant tank and application.



FEATURES AND BENEFITS

- Compact and motorized automatic sludge recovery unit with an integral permanent magnet.
- Includes a cord with plug that can fit any standard 110V receptacle.
- Repeat cycle timer for flexibility in handling larger chip loads while reducing coolant carryout.
- Simplifies in-tank sludge recovery and disposal without troublesome manual operations.
- Easy retrofitting for existing coolant tanks by merely cutting 9.4" x 6.9" slot in the cover or lid.
- Mount near the pumps to reduce the amount of particulate sent back to the machine or mount next to the conveyor to remove ferrous particles as they exit the conveyor.
- Stainless steel construction for functionality and durability.
- Will also remove tramp oils, the number one contaminant of machine tool coolant systems.

SPECIFICATIONS

MODEL NUMBER	DIMENSIONS*	VOLTAGE
ASB-110V480H800	31.50" x 15.3" x 18.8"	110 Volts
ASB-110V785H800	46.75" x 15.3" x 18.8"	110 Volts

RETURN ON INVESTMENT

With Mayfran's Auto Sludge Barrier, you can expect payback within just one year. Shown below are the expected savings when using with a machine in conjunction with a non-magnetic conveyor or a typical cast iron application.**

Labor cost savings from
reduced tank clean outs

\$800/YEAR

Coolant cost savings

\$1,000/YEAR

Savings from increased uptime through
reduced tank clean outs

\$1,600/YEAR

Total Savings

\$3,400/YEAR



* Width dimension includes discharge bucket

**ROI is based on four tank clean-outs per year vs. eight, at four hours each.

MAYFRAN.COM info@mayfran.com

Printed in the USA © 2020 Mayfran International Inc.

10.2020

Innovation in Motion
TSUBAKI

mayfran
INTERNATIONAL