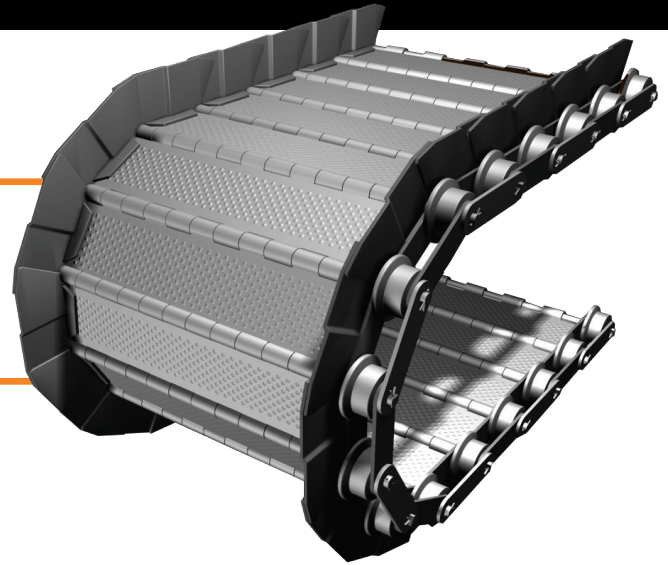


# CONVEYOR BELT GUIDE

Mayfran International offers the combination of highly engineered conveyor belts with over 80 years of proven industry know-how.

Mayfran has all of your engineering conveying needs – built for superior durability and extended chain life – and keeps your operation up and downtime low.

## 2.5", 4", 6" and 9" Pitch Hinged Steel Belts



### FEATURES AND BENEFITS

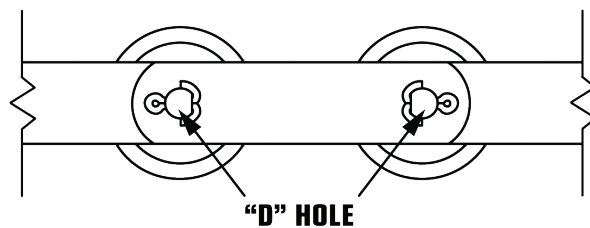
- All Mayfran hinged steel belting is constructed of precision die-formed carbon steel for extra belt life and durability.
- All belts feature double-row, precision die-punched side bars.
- Pin-and-bushing construction reduces joint pressure, minimizing wear and extending belt life.
- Hardened single-flange rollers keep belts moving.

### CHAIN DESIGN

The key design factor is the chain joint pressure, which occurs where adjacent chain parts rub against each other as the chain flexes around the sprockets and in curves.

In a Mayfran chain, every other link is a roller block with bushings positively locked to the side bars. The alternate links have "D" hole side bars, which engage flats milled on the ends of the connecting pins.

This concentrates the rubbing motion on the large contact surfaces between the pin and the bushing. This large contact surface keeps the joint pressure low, minimizing wear and maximizing chain life.



**QUALITY, BUILT IN.**

Innovation in Motion  
**TSUBAKI**

  
**mayfran**  
INTERNATIONAL

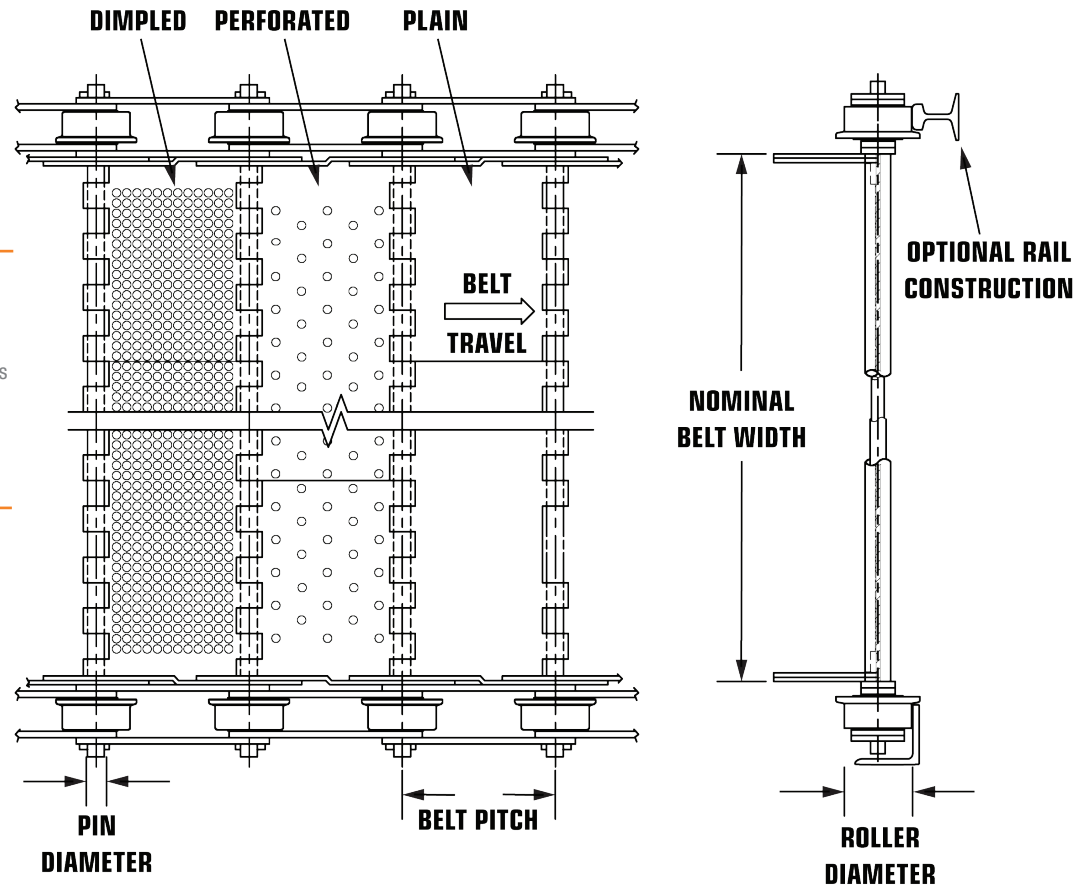
# BELT CONSTRUCTION

## BELT WIDTH

- 2.5" Pitch = 6" to 36" in 1.5" increments
- 4" Pitch = 12" to 48" in 6" increments
- 6" & 9" Pitch = 12" to 86" in 6" increments

## STANDARD BELT THICKNESS

- 2.5" Pitch = 0.125" (3.2mm)
- 4" Pitch = 0.158" (4mm)
- 6" & 9" Pitch = 0.1875" or .25" (4.8mm or 6.4mm)



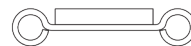
## OPTIONAL BELT REINFORCEMENTS



Channel (RC)  
with impact shoe



A-Pan (RA)  
with impact shoe

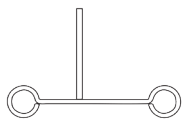


Top Plate (RP)

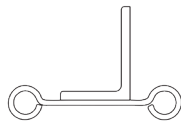


Impact Shoe

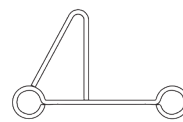
## AVAILABLE BELT CLEAT STYLES



Bar Cleat



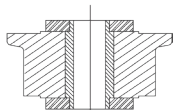
Angle Cleat



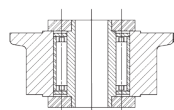
Formed Cleat

*Cleats can be plain,  
notched or coped*

## OPTIONAL ROLLERS

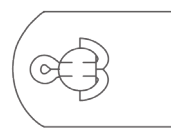


Plain Roller

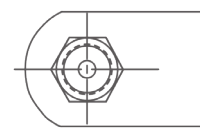


Anti-friction Roller  
*For 6" & 9" only*

## OPTIONAL BELT PIN STYLES



Pin Style #3 Cotted



Pin Style #5 Hug Locknut  
*Multiple grease fittings options available*